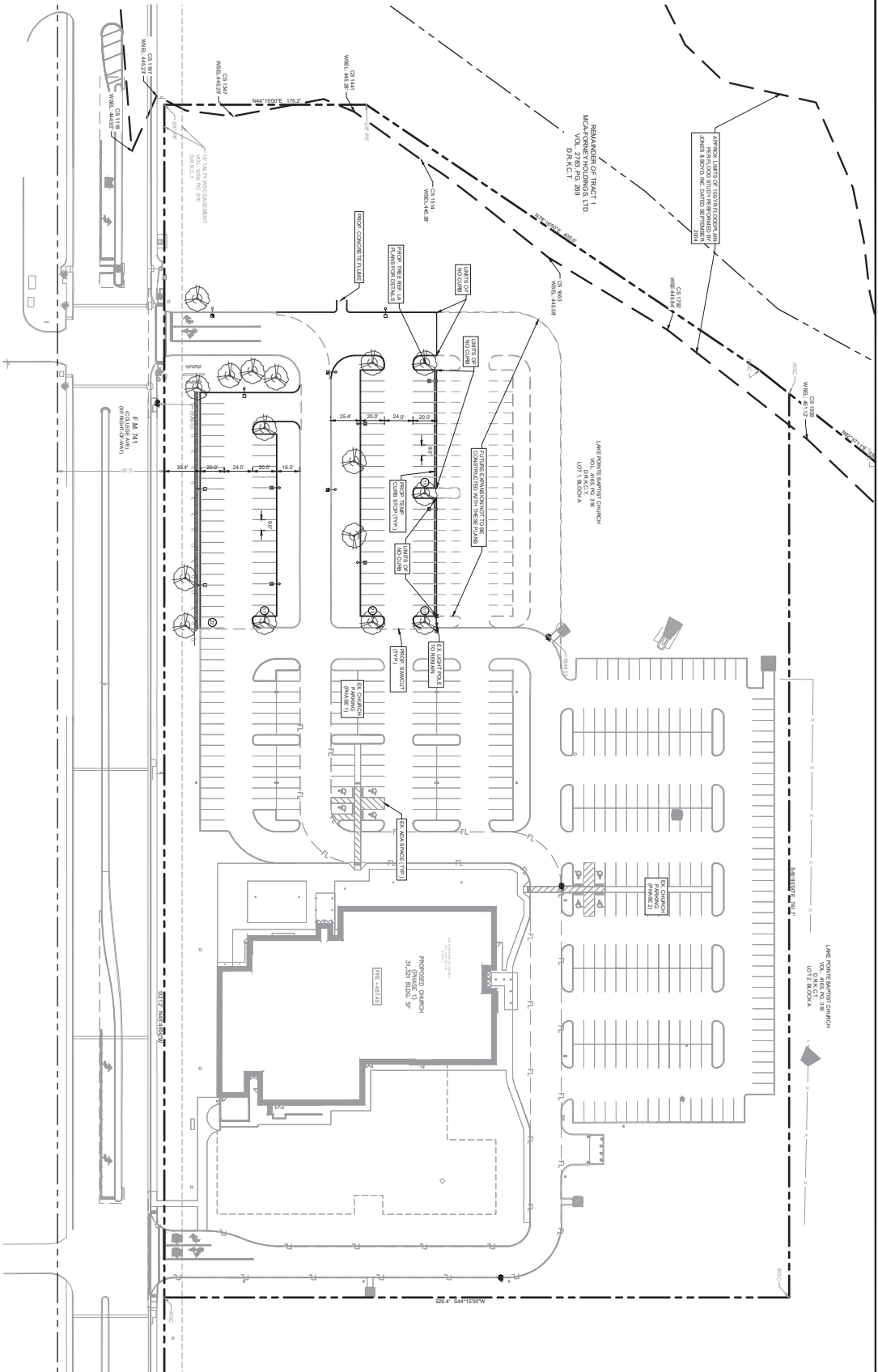


This document, together with the contract and design presented herein, is an instrument of service, a recorded copy to be filed with the County Clerk of Tarrant County, Texas. It is the property of Kimley-Horn and Associates, Inc. and shall remain the property of Kimley-Horn and Associates, Inc. until such time as it is returned to Kimley-Horn and Associates, Inc. in writing.



NOTES

1. ALL DIMENSIONS ARE TO FACE OF CURB UNLESS OTHERWISE NOTED.
2. ALL DIMENSIONS ARE TO FACE OF CURB UNLESS OTHERWISE NOTED.
3. ALL DIMENSIONS ARE TO FACE OF CURB UNLESS OTHERWISE NOTED.
4. APPROVED BY JOHN KARMON INC. (DATE: 5/17/2023)

LEGEND

PROPOSED CURB	(Symbol)
PROPOSED ASPHALT DRIVEWAY	(Symbol)
PROPOSED ASPHALT DRIVEWAYS	(Symbol)
PROPOSED DRIVEWAY	(Symbol)
PROPOSED DRIVEWAYS	(Symbol)
PROPOSED DRIVEWAY	(Symbol)
PROPOSED DRIVEWAYS	(Symbol)

SITE DATA SUMMARY TABLE

LOT	ZONING	PROPOSED USE	LOT AREA SF	AC	BUILDING AREA SF	BUILDING HEIGHT FT	REQUIRED PARKING SPACES	PROVIDED PARKING SPACES	NET NUMBER OF SPACES	PARKING PROVIDED (PHASE 1)	PARKING PROVIDED (PHASE 2)	PARKING PROVIDED (PHASE 3)	REQUIRED PARKING SPACES	PROVIDED PARKING SPACES
1	P0111V126	CHURCH/PLACE OF WORSHIP	486,292	11.164	31,321	37	1,394 PER SPACES IN ADDITION	495	165	304	84	388	8	8

SHEET NUMBER
SP-001

PHASE 3 PARKING EXPANSION
 PREPARED FOR
LAKEPOINTE CHURCH
 CITY OF FORNEY, TEXAS

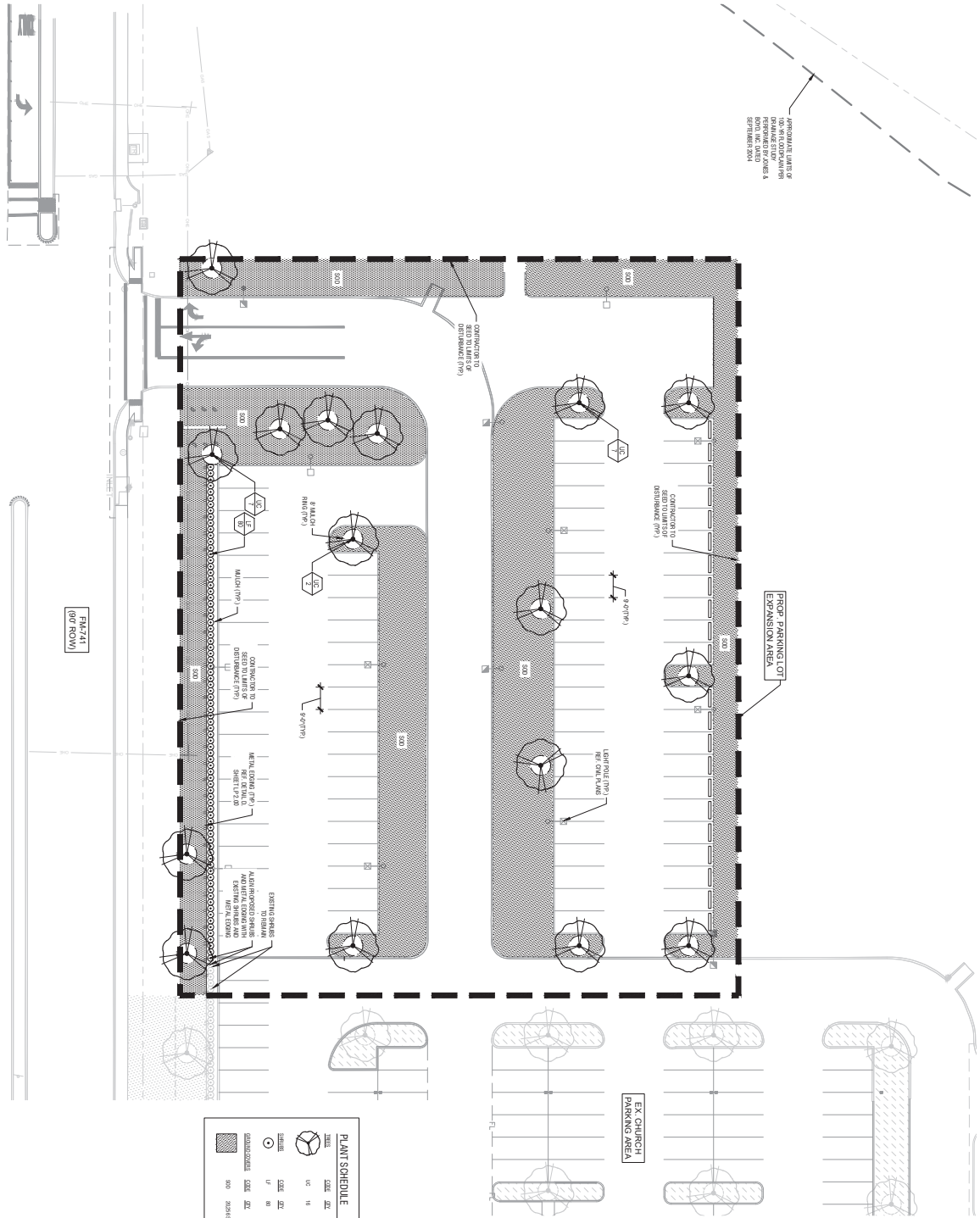
KHA PROJECT
 064608801
 DATE
 5/17/2023
 SCALE AS SHOWN
 DESIGNED BY MJF
 DRAWN BY MJF
 CHECKED BY MAL



Kimley-Horn
 13455 NOEL RD. TWO GALLERIA OFFICE TOWER
 SUITE 700 DALLAS, TX 75240
 PHONE: 972-770-1500 FAX: 972-298-3820
 WWW.KIMLEY-HORN.COM TX F-528
 © 2023 KIMLEY-HORN AND ASSOCIATES, INC.

No.	REVISIONS	DATE	BY

This document, together with the contract and approved project, is an instrument of service, a record of the work performed and the basis for which the fee proposed in the contract is due. It is the property of Kimley-Horn and Associates, Inc. and shall be returned to Kimley-Horn and Associates, Inc. upon completion of the project. No part of this document shall be reproduced or transmitted in any form or by any means, electronic or mechanical, including photocopying, recording, or by any information storage and retrieval system, without the prior written permission of Kimley-Horn and Associates, Inc.



SYMBOL	CODE	SIZE	QUANTITY	DESCRIPTION
UC	UC 16	16"	1	ULMUS CRISPATUS (CORNELIUS)
LF	LF 80	80"	1	LIRIODENDRON TEXENSE (TEXAS Sycamore)
80	80	80"	1	QUERCUS LAEVOGLOBOSA (WHITE OAK)
90	90	90"	1	QUERCUS LAEVOGLOBOSA (WHITE OAK)

Requirement	Required	Provided
General Standards (SECTION 31.8.1)		
All proposed landscape openings shall be completely covered with approved landscape materials.	YES	YES
Plant materials shall conform to the standards of the approved plant schedule.	YES	YES
Plantings shall be installed in accordance with the approved plant schedule.	YES	YES
Watering Requirements (SECTION 31.8.2)		
Plantings shall be watered for a minimum of 14 days after installation.	YES	YES
Plantings shall be watered for a minimum of 14 days after installation.	YES	YES
Planting Specifications (SECTION 31.8.3)		
Plantings shall be installed in accordance with the approved plant schedule.	YES	YES
Plantings shall be installed in accordance with the approved plant schedule.	YES	YES
Planting Schedule (SECTION 31.8.4)		
Plantings shall be installed in accordance with the approved plant schedule.	YES	YES
Plantings shall be installed in accordance with the approved plant schedule.	YES	YES

SHEET NUMBER
LP 1.00
LANDSCAPE PLAN

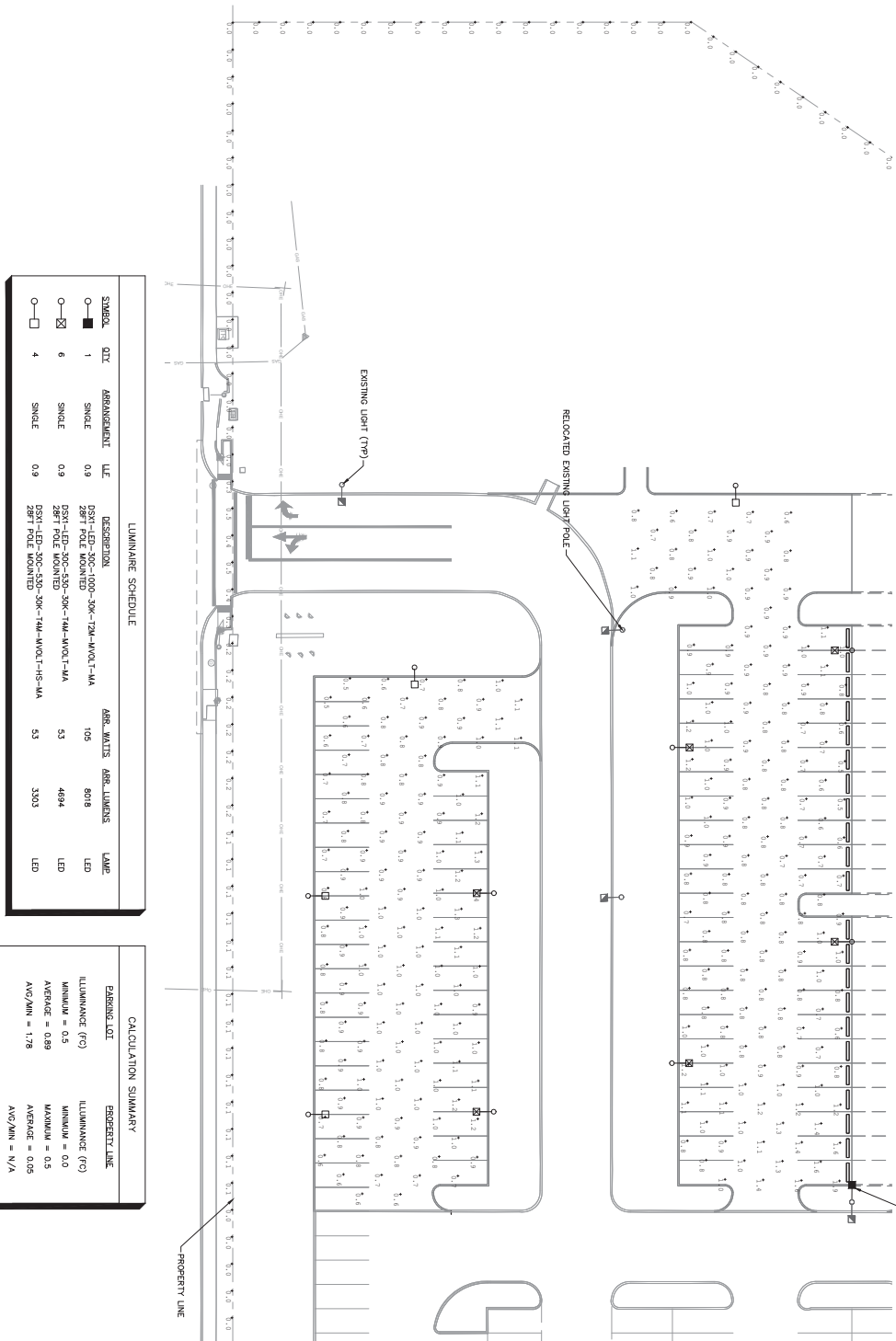
PHASE 3 PARKING EXPANSION
 PREPARED FOR
LAKE POINTE CHURCH
 CITY OF FORNEY, TEXAS

KHA PROJECT
 06460801
 DATE
 05/16/2023
 SCALE AS SHOWN
 DESIGNED BY MMB
 DRAWN BY MMB
 CHECKED BY LLL

Kimley-Horn
 13455 NOEL RD. TWO GALLERIA OFFICE TOWER
 SUITE 700 DALLAS, TX 75240
 PHONE: 972.770.1500 FAX: 972.228.3820
 WWW.KIMLEY-HORN.COM TX F-828
 © 2023 KIMLEY-HORN AND ASSOCIATES, INC.

No.	REVISIONS	DATE	BY

This document, together with the concepts and designs presented herein, are an extension of service rendered only for the specific project and for which it was prepared. Review of and approval of this document without written authorization and adaptation by Kimley-Horn and Associates, Inc. shall be without liability to Kimley-Horn and Associates, Inc.



LUMINAIRE SCHEDULE			
SYMBOL	QTY	ARRANGEMENT	LUE
○	1	SINGLE	0.9
○	6	SINGLE	0.9
○	4	SINGLE	0.9
		DESCRIPTION	
		DS21-LED-30K-1000-30K-12M-4VOLT-4A	105
		28FT POLE MOUNTED	8018
		DS21-LED-30K-43X-30K-14M-4VOLT-4A	53
		28FT POLE MOUNTED	4994
		DS21-LED-30K-43X-30K-14M-4VOLT-4A	53
		28FT POLE MOUNTED	3303
		LAMP	
		LED	
		LED	
		LED	

CALCULATION SUMMARY	
PROPERTY LOT	PROPERTY LINE
ILLUMINANCE (FC)	ILLUMINANCE (FC)
MINIMUM = 0.5	MINIMUM = 0.0
AVERAGE = 0.89	AVERAGE = 0.05
AVG/MIN = 1.78	AVG/MIN = N/A

PHOTOMETRIC PLAN
 SHEET NUMBER
E-101

PHASE 3 PARKING EXPANSION
 PREPARED FOR
LAKEPOINTE CHURCH
 CITY OF FORNEY, TEXAS

KHA PROJECT
 06458662
 DATE
 5/16/2023
 SCALE AS SHOWN
 DESIGNED BY M.J.F.
 DRAWN BY M.J.F.
 CHECKED BY M.A.L.



Kimley-Horn
 13455 NOEL RD., TWO GALLERIA OFFICE TOWER
 SUITE 700 DALLAS, TX 75240
 PHONE: 972-770-1300 FAX: 972-238-3820
 WWW.KIMLEY-HORN.COM TX F-528
 © 2023 KIMLEY-HORN AND ASSOCIATES, INC.

GRAPHIC SCALE IN FEET
 0 10 20 40
 NORTH
LEGEND
 ○ PROPOSED TYPE 1 LIGHT POLE
 ○ PROPOSED TYPE 4 LIGHT POLE
 ○ PROPOSED TYPE 4 LIGHT POLE
 ○ EXISTING LIGHT POLE
 REVISIONS
 DATE BY