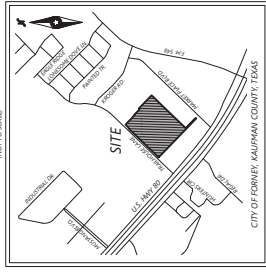


VICINITY MAP



GENERAL NOTES

1. BEARING AND DISTANCE ARE GIVEN FOR THE PERMANENT MONUMENTS AND ARE BASED UPON THE NORTH MAGNETIC DECLINATION AT THE TIME OF SURVEY. THE DISTANCE IS THE MEASURED DISTANCE AND NOT THE DISTANCE AS SHOWN ON THE PLAT. THE DISTANCE IS THE MEASURED DISTANCE AND NOT THE DISTANCE AS SHOWN ON THE PLAT.
2. THE DISTANCE IS THE MEASURED DISTANCE AND NOT THE DISTANCE AS SHOWN ON THE PLAT. THE DISTANCE IS THE MEASURED DISTANCE AND NOT THE DISTANCE AS SHOWN ON THE PLAT.
3. THE DISTANCE IS THE MEASURED DISTANCE AND NOT THE DISTANCE AS SHOWN ON THE PLAT. THE DISTANCE IS THE MEASURED DISTANCE AND NOT THE DISTANCE AS SHOWN ON THE PLAT.
4. THE DISTANCE IS THE MEASURED DISTANCE AND NOT THE DISTANCE AS SHOWN ON THE PLAT. THE DISTANCE IS THE MEASURED DISTANCE AND NOT THE DISTANCE AS SHOWN ON THE PLAT.
5. THE DISTANCE IS THE MEASURED DISTANCE AND NOT THE DISTANCE AS SHOWN ON THE PLAT. THE DISTANCE IS THE MEASURED DISTANCE AND NOT THE DISTANCE AS SHOWN ON THE PLAT.
6. THE DISTANCE IS THE MEASURED DISTANCE AND NOT THE DISTANCE AS SHOWN ON THE PLAT. THE DISTANCE IS THE MEASURED DISTANCE AND NOT THE DISTANCE AS SHOWN ON THE PLAT.
7. THE DISTANCE IS THE MEASURED DISTANCE AND NOT THE DISTANCE AS SHOWN ON THE PLAT. THE DISTANCE IS THE MEASURED DISTANCE AND NOT THE DISTANCE AS SHOWN ON THE PLAT.
8. THE DISTANCE IS THE MEASURED DISTANCE AND NOT THE DISTANCE AS SHOWN ON THE PLAT. THE DISTANCE IS THE MEASURED DISTANCE AND NOT THE DISTANCE AS SHOWN ON THE PLAT.
9. THE DISTANCE IS THE MEASURED DISTANCE AND NOT THE DISTANCE AS SHOWN ON THE PLAT. THE DISTANCE IS THE MEASURED DISTANCE AND NOT THE DISTANCE AS SHOWN ON THE PLAT.

LEGEND

- PERMITS, KAUFMAN COUNTY, TEXAS
- PLAT RECORDS, KAUFMAN COUNTY, TEXAS
- OFF-SITE EASEMENT LINE
- EXISTING EASEMENT LINE
- PROPOSED LOT LINE
- FOUND MONUMENT
- SET MONUMENT
- 5/8 INCH IRON ROD SET WITH CAP STAMPED "M"
- ONE END MARKING

CASE NO.:

PRELIMINARY PLAT

FORNEY MARKETPLACE ADDITION

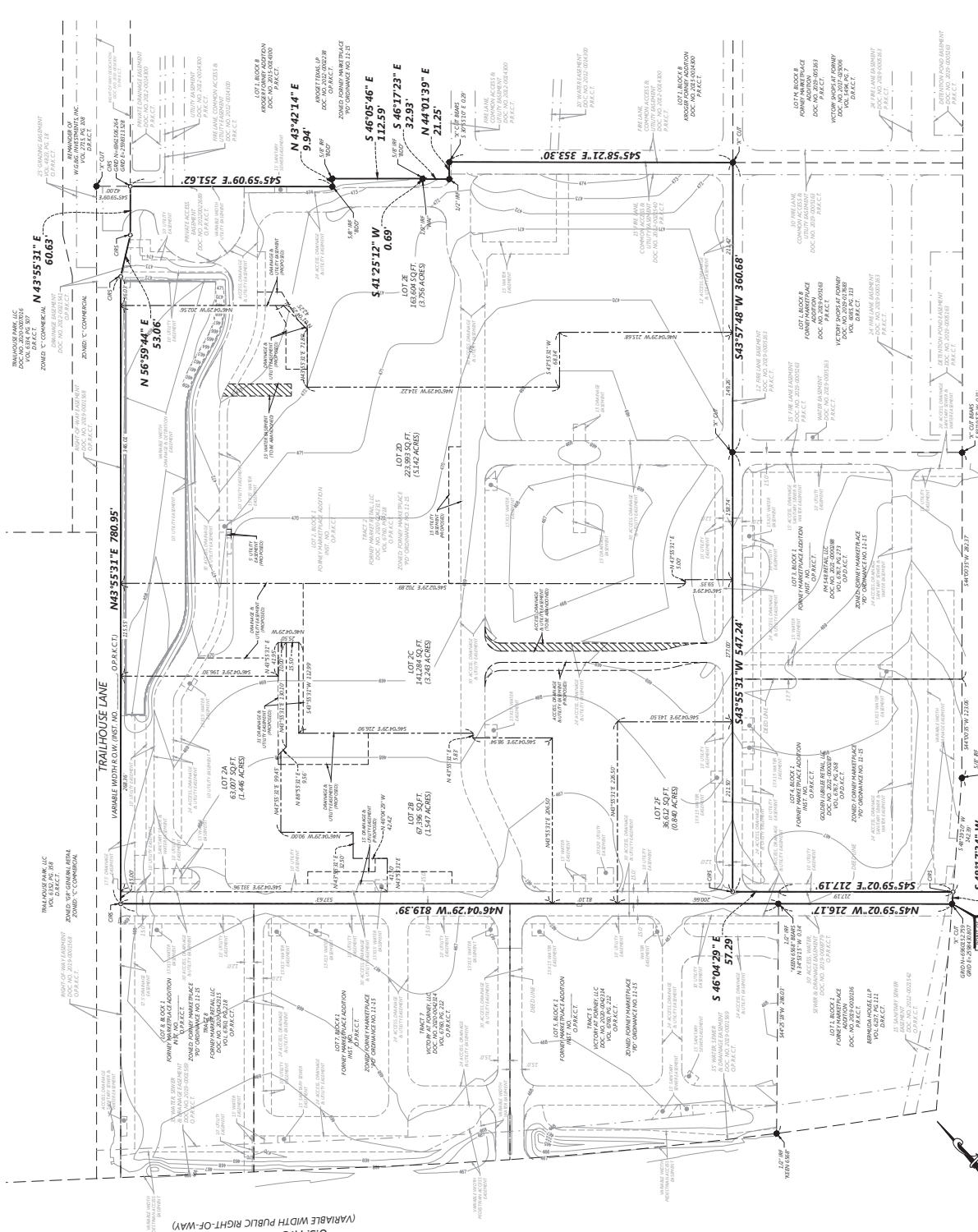
LOTS 2A, 2B, 2C, 2D, 2E & 2F, BLOCK 1 BEING LOT 2, BLOCK 1 OF FORNEY MARKETPLACE ADDITION, 15.976 ACRES, OUT OF THE JOHN GREGG SURVEY, ABSTRACT NO. 171, CITY OF FORNEY, KAUFMAN COUNTY, TEXAS

PAGE 1 OF 2



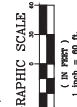
DATE: 03/17/2021

JOB NO.: JMS-VG22001



MARKET PLACE BOULEVARD (F.M. HIGHWAY NO. 548) (VARIABLE WIDTH PUBLIC RIGHT-OF-WAY)

15.04'



U.S. HIGHWAY NO. 80 (VARIABLE WIDTH PUBLIC RIGHT-OF-WAY)

