

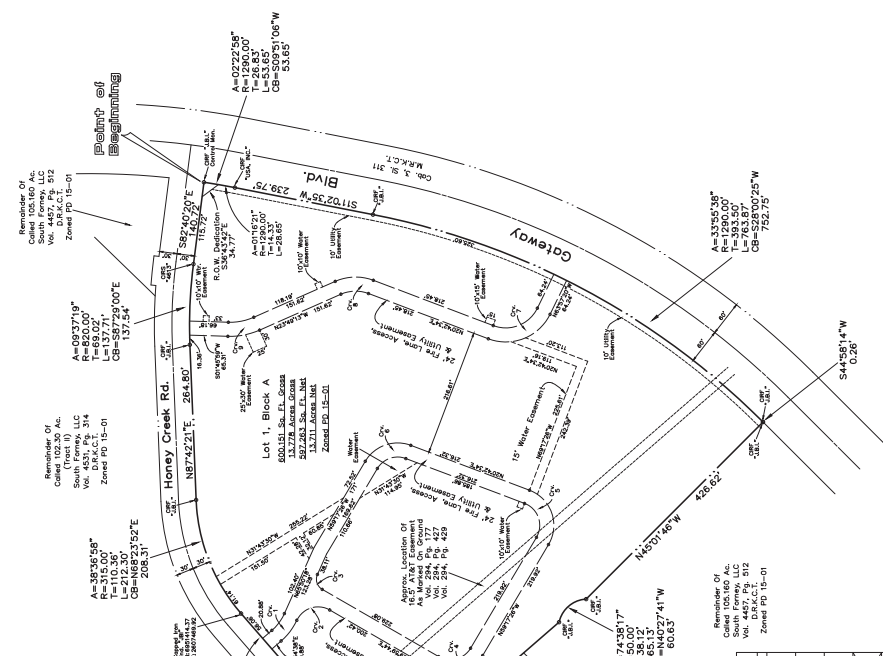
SHEET 1 OF 2  
 PRELIMINARY PLAT  
**DON R. WILLETT**  
**ELEMENTARY SCHOOL**  
 LOT 1, BLOCK A

13.776 Acres Situated in The  
 ABSALOM HYER SURVEY ~ ABST. 203  
 FORNEY, KAUFMAN COUNTY, TEXAS

The Board of Trustees Of The  
 Forney Independent School District  
 001 West Main Street  
 Forney, Texas 75728  
 Telephone 972-62-4100

R.L.A. Engineers, Inc.  
 111 West Main Street  
 Forney, Texas 75728  
 Telephone 972-62-1733

Surveyors:  
 R.L.A. Engineers, Inc.  
 Firm No. 100895200  
 Armo, Texas 75728-6900  
 Telephone 972-62-4100  
 January 20, 2021



Curve Data Chart

Curve	Station	Chord	Chord	Chord
1	1+00.00	1+00.00	1+00.00	1+00.00
2	1+00.00	1+00.00	1+00.00	1+00.00
3	1+00.00	1+00.00	1+00.00	1+00.00
4	1+00.00	1+00.00	1+00.00	1+00.00
5	1+00.00	1+00.00	1+00.00	1+00.00
6	1+00.00	1+00.00	1+00.00	1+00.00

Remainder Of  
 102.30 Ac.  
 South Forney, LLC  
 Vol. 453, P. 314  
 D.B.A.C.T. 2  
 Zone PD 15-01

Remainder Of  
 102.30 Ac.  
 South Forney, LLC  
 Vol. 453, P. 314  
 D.B.A.C.T. 2  
 Zone PD 15-01

Remainder Of  
 102.30 Ac.  
 South Forney, LLC  
 Vol. 453, P. 314  
 D.B.A.C.T. 2  
 Zone PD 15-01

Remainder Of  
 102.30 Ac.  
 South Forney, LLC  
 Vol. 453, P. 314  
 D.B.A.C.T. 2  
 Zone PD 15-01

Remainder Of  
 102.30 Ac.  
 South Forney, LLC  
 Vol. 453, P. 314  
 D.B.A.C.T. 2  
 Zone PD 15-01

Remainder Of  
 102.30 Ac.  
 South Forney, LLC  
 Vol. 453, P. 314  
 D.B.A.C.T. 2  
 Zone PD 15-01

