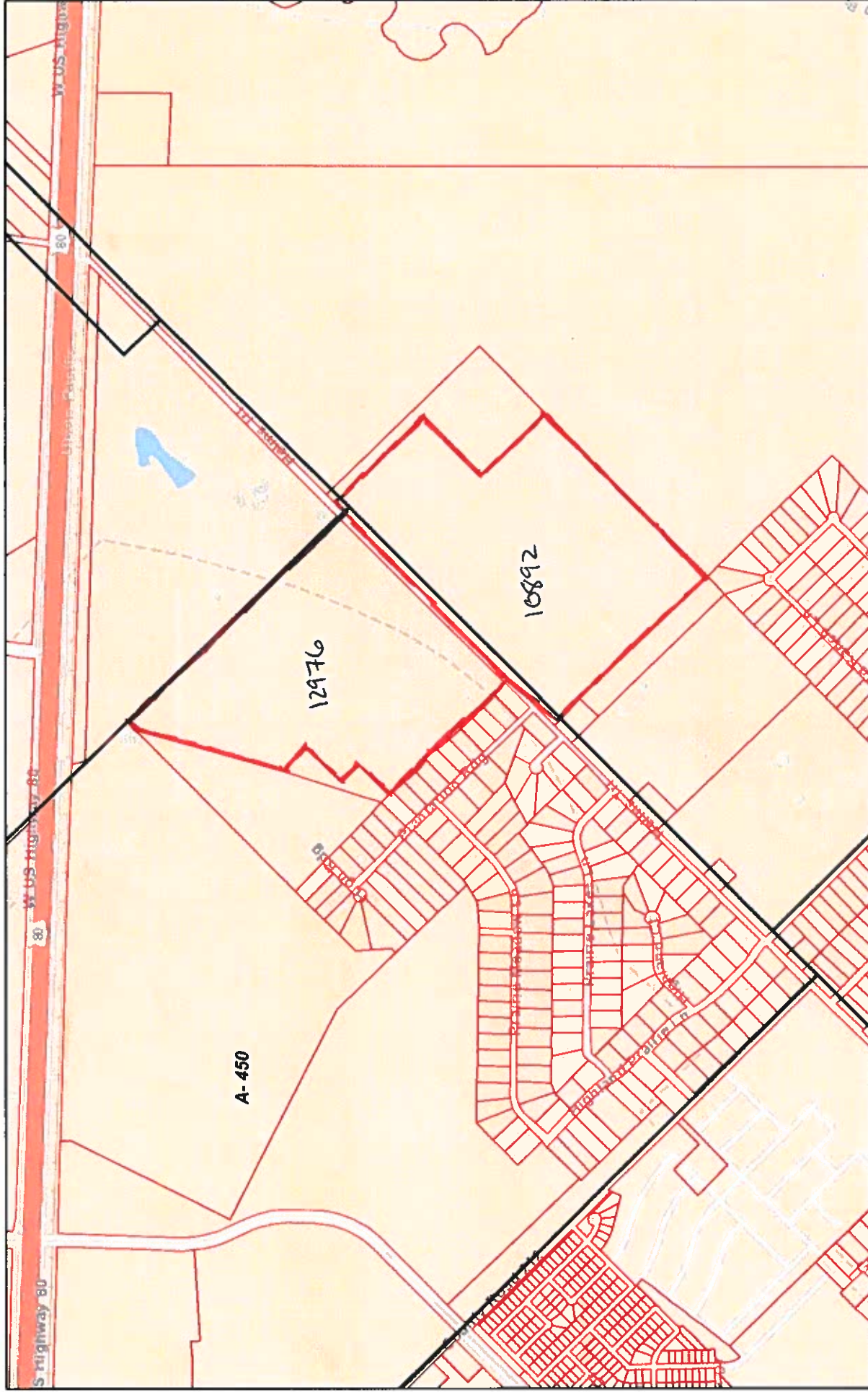




# Kaufman CAD Web Map



3/31/2020, 4:25:02 PM

-  Abstracts
-  Parcels

1:18,056  
0 0.13 0.25 0.4 0.5 mi  
0 0.2 0.4 0.8 km

Sources: Esri, HERE, Garmin, USGS, Intermap, INCREMENT P, NRCan, Esri Japan, METI, Esri China (Hong Kong), Esri Korea, Esri (Thailand),  
Kaufman County Appraisal District, BIS Consulting - www.bisconsulting.com

Disclaimer: This product is for informational purposes only and has not been prepared for or be suitable for legal, engineering, or surveying purposes. It does not represent an on-the-ground survey and represents only the approximate relative location of boundaries.